

Pros and Cons of Developing a Website in Figma

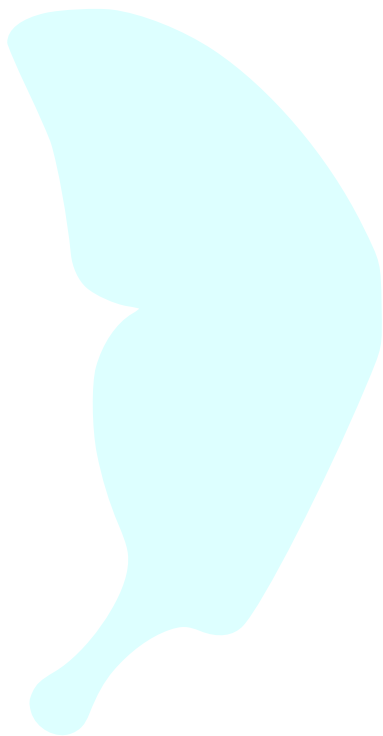
Category: Websites Blog
April 2, 2024

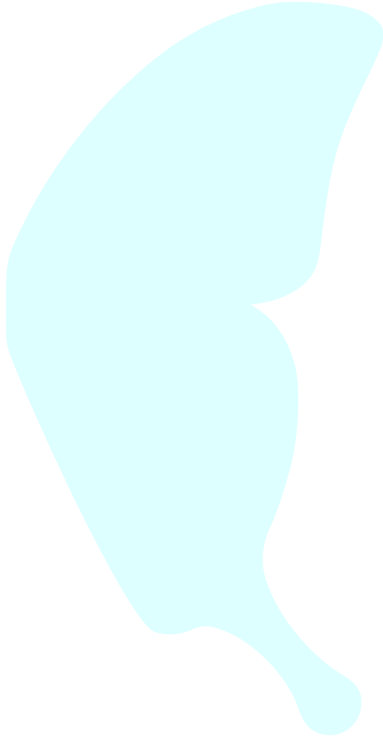


Pros and Cons of Developing Your Website in Figma

[Get An Online Quote](#)

Developing Your Website in Figma





Figma: shedding light on whether it's the right fit

Choosing the right tools is paramount to success. Figma, a collaborative interface design tool, has gained significant traction in recent years. In this blog, we will delve into the pros and cons of developing a website in Figma, shedding light on whether it's the right fit for your project.

Pros of Figma Development:

1. Collaboration Unleashed:

Figma's real-time collaboration features are a game-changer. Designers and developers can work seamlessly together, breaking down silos and fostering efficient teamwork. The ability to comment, edit, and iterate in real time streamlines the development process.

2. Design Consistency:

With Figma, maintaining design consistency across different screens and devices becomes more manageable. Components, styles, and design libraries ensure that your website's aesthetic remains cohesive, reducing the likelihood of inconsistencies.

3. Prototyping Prowess:

It is renowned for its robust prototyping capabilities. Create interactive prototypes that simulate user experiences, helping stakeholders and clients visualize the final product. This aids in obtaining feedback early in the design process.

4. Cross-Platform Accessibility:

Figma is not bound by operating systems. Its cloud-based nature allows seamless access from various platforms, making it a versatile choice for teams with diverse setups.

5. Version Control:

Version control is inherent in [Figma](#), eliminating the risk of design version mismatches. You can track changes, revert to previous versions, and maintain a comprehensive history of your project's development.

Cons of Figma Development:

1. Performance for Large Projects:

While Figma excels in collaboration, it may experience performance issues with extremely large projects. This can slow down the design process, particularly when dealing with intricate and extensive designs.

2. Learning Curve for New Users:

For designers accustomed to other tools, adapting to Figma might pose a learning curve. While the interface is user-friendly, the transition can take time, potentially affecting initial project timelines.

3. Dependency on Internet Connection:

Figma's cloud-based nature implies a dependence on a stable internet connection. This might be a hindrance for teams in areas with unreliable or slow internet access.

4. Limited Advanced Interactions:

While Figma's prototyping capabilities are robust, it might lack some of the advanced interactions that other specialized tools offer. Depending on the complexity of your project, this could be a limitation.

5. Exporting Limitations:

Exporting assets from Figma to other design tools might not always be seamless. This could be a concern if your workflow involves collaborating

with individuals or teams using different design software.

Conclusion

In weighing the pros and cons of developing a website in Figma, it's evident that the tool's collaborative features and design consistency are significant advantages. However, potential challenges, such as performance issues with large projects and a learning curve for new users, should be considered. Ultimately, Figma's suitability depends on the specific needs and dynamics of your web development project.

[Go Back >](#)

[Get Yours Now](#)

I